

# QCX® PSI100X INSPECTION SAMPLER ATEX

The PSI100X Inspection Sampler ATEX is used for spot and continuous sampling of potentially flammable and ignitable fine powder and granular materials from a chute. It is usually used for coal dust or milled coal, and is best suited for materials with a grain size up to 2 mm and a maximum temperature of 80°C.

Sampling ignitable products comes with inherent risks for your operators. The Inspection Sampler is especially designed to perform highly representative sampling of this type of material in the safest possible way. It complies with all ATEX legal requirements for controlling explosive atmospheres and for the equipment and systems used within.

The Inspection Sampler is made with high quality materials that will not produce sparks. If small explosions occur, your operators are protected by high pressure resistant valves.

Overall, it is a high-quality screw sampler that can be trusted to produce consistent material.

## ADVANTAGES

- **Certified:** the Inspection Sampler is compliant with strict ATEX regulations, strongly reducing the risk of potential accidents for your operators.
- **Consistency:** the high-quality screw sampler design ensures the Inspection Sampler consistently delivers highly representative samples.
- **Trusted:** as a robust product within our trusted and well supported range, you can have extra peace of mind to use this inspection sampler in inherently dangerous conditions.

# REDUCING RISK IN EXPLOSIVE ENVIRONMENTS

## How it works

The Inspection Sampler is usually applied before or after the coal silo in the free-falling material stream.

To take the sample, your operator empties the screw by reversing the drive direction.

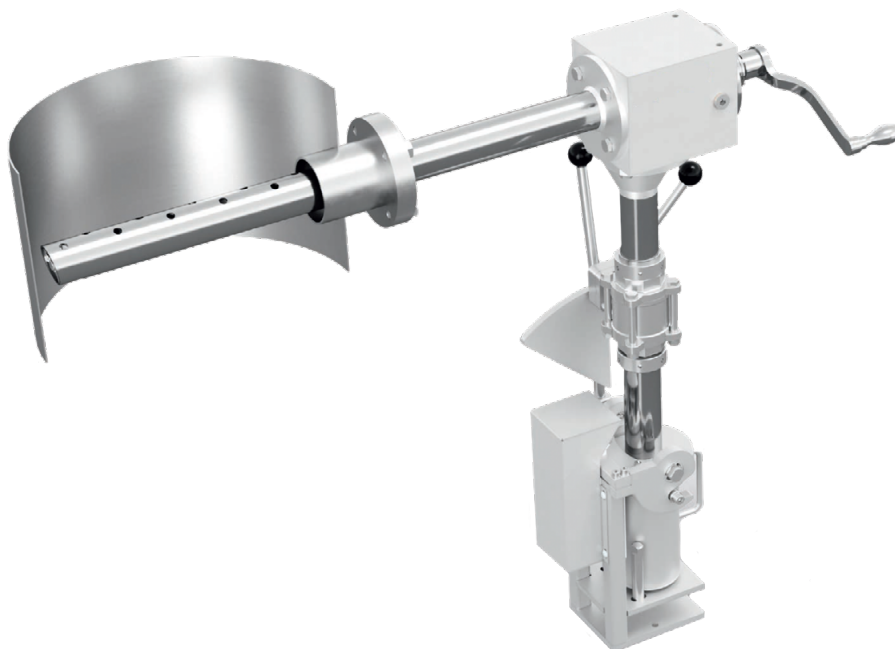
The sample container holds up to two litres of material, and a mechanical interlock prevents the system from sampling if no container is in place.

## Possible configuration

As well as being purposefully designed to be ATEX compliant, the Inspection Sampler is a highly functional unit that can be used in any chute.

## Specification

<b>Sampler length</b>	Up to 1,500 mm, longer on request
<b>Sample material</b>	Dry, non-sticky, up to 80°C, top size 2 mm
<b>Sampling location</b>	Vertical chute with free falling material
<b>Sampling type</b>	Spot sample
<b>Sample quantity</b>	Max. 2 l
<b>Sample frequency</b>	On demand
<b>Operating conditions</b>	Temperature: -20°C to 55°C Humidity: 0 - 100 %
<b>Weight</b>	Approx. 80 kg
<b>Dimensions (W x D x H)</b>	Max. 1,880 x 310 x 1,090 mm
<b>Sampler certification</b>	ATEX zone 20/22



**FULLER**®  
TECHNOLOGIES



[fuller-technologies.com](https://fuller-technologies.com)