



TECHNICAL INFORMATION

ROTOR WEIGHFEEDER PFISTER® TRW

Rotor weighfeeder Pfister® TRW + prospective control ProsCon®:
Dosing to perfection.

POWERFUL HANDLING OF COARSE AND HOT MATERIALS

Whether dosing materials to the raw and finish mill or clinker pre-loading, the robust design of rotor weighfeeder Pfister® TRW is ideal for metering coarse bulk materials such as clinker, pre-ground cement, limestone, gypsum etc. with high constancy and precision. Due to the integration of material extraction, weighing and dosing the system is easy to operate and thus extremely reliable.

Application fields: Grinding process and pre-loading

Materials: Bulk materials such as limestone, gypsum, pre-ground cement, clinker

Dosing capacity: Up to 400 t/h

Design example:

- Calibration pre-hopper
- Pre-hopper load cells
- Needle gate
- Rotor weighfeeder Pfister® TRW

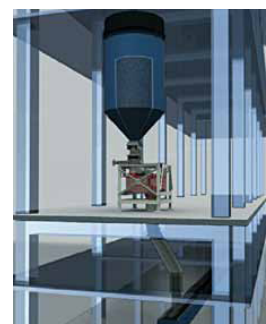
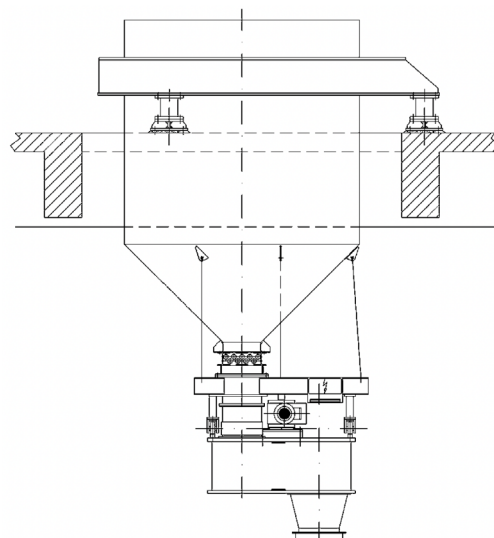
Features:

- Stable material dosing
- Outstanding reliability
- High short- and long-term accuracy
- Compact, robust and closed design
- High measuring loads
- Large feeding range
- Online calibration possible
- Simple and modular design
- Slowly moving rotor
- Easy to maintain

Dosing control:

- Feeder dosing controller Pfister® FDC
- Prospective control ProsCon®
- FlowBalance™ control
- User oriented interfaces
- Remote service access available

Certificates: ISO 9001



FULLER®
TECHNOLOGIES



fuller-technologies.com