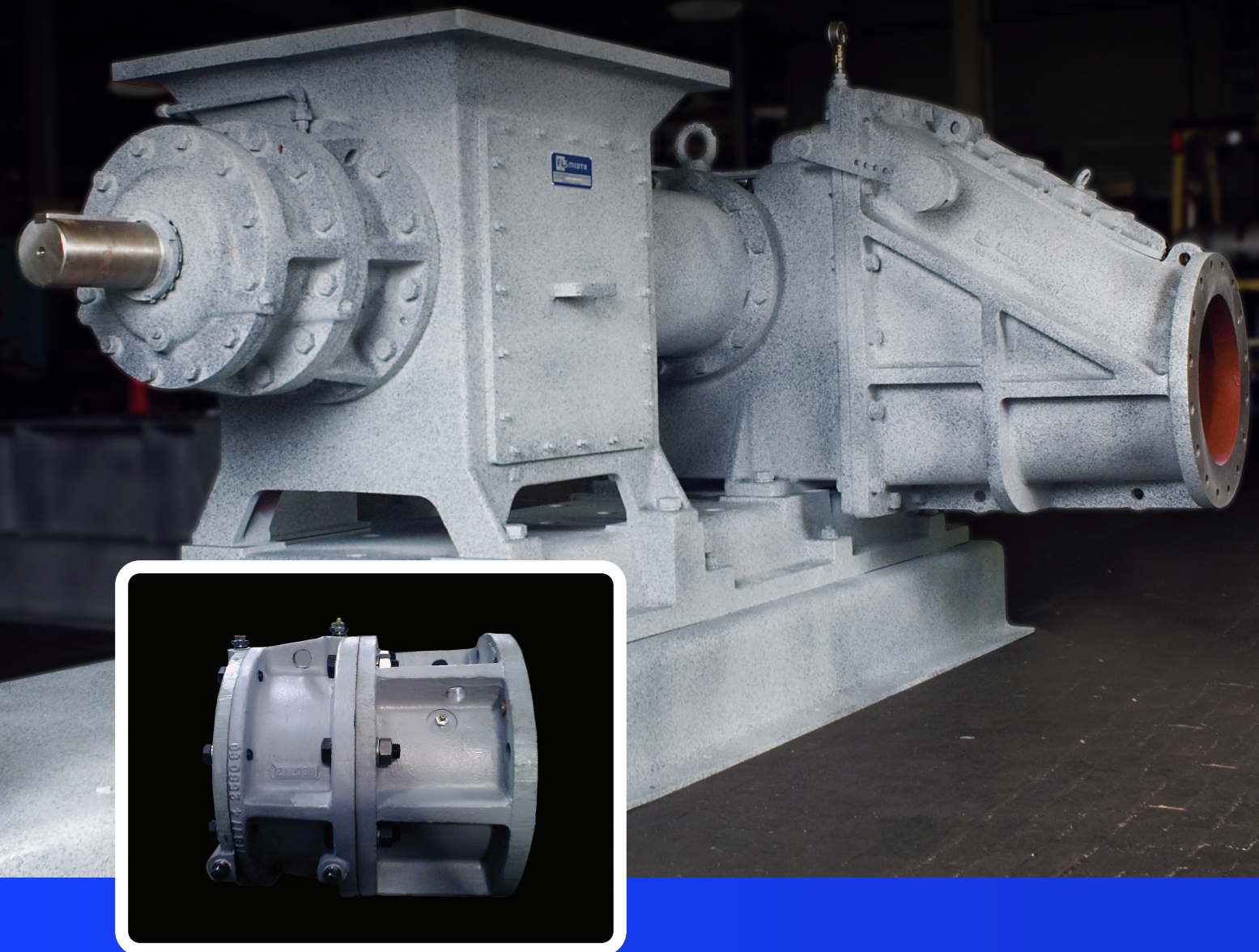


FULLER®



BEARING HOUSE ASSEMBLY

FOR FULLER-KINYON® M PUMPS

CUT DOWNTIME BY

Reduce down-time and save on both parts and labor costs with our Hot Swap bearing assembly and exchange program

KEY BENEFITS

01

Fully assembled unit complete with seals, bushings, bearings, and drive or stub shaft

02

Significantly less than buying the individual parts

03

Reduce downtime from 7 - 10 hours, to approximately 3 hours

04

Backed by our 1-year materials and workmanship warranty

05

For additional savings, take advantage of our Bearing Exchange program

MAXIMIZE THE BENEFITS

Maximize the benefits of the 3-piece screw in your Type M Fuller-Kinyon® pumps by keeping Hot Swap bearing assemblies on your shelf. Having complete bearing assemblies readily available allows for the quickest replacement and shortest possible downtime for your Fuller-Kinyon pump systems.

Each Hot Swap is a fully-assembled unit complete with seals, bushings, bearings, and drive or stub shaft. The cost of each assembly is significantly less than buying the individual parts. The savings get even better when you factor in the reduced overall system downtime.

The typical removal, rebuild, and reassembly of a worn bearing unit can take up to 7-10 hours, depending on the extent of wear to the original parts. With a Hot Swap available on the shelf, you can be up and running in approximately 3 hours.

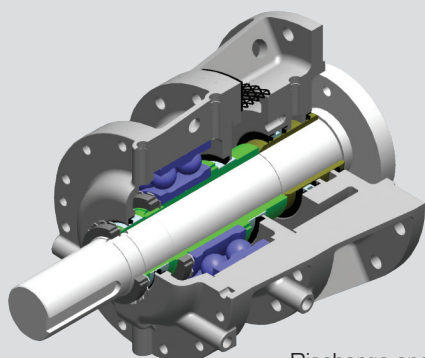
Once the new assembly is “swapped” onto the pump, you can rebuild the worn assembly when time allows.

Even with a high-quality machine like a Fuller-Kinyon pump, it's not a question of if a bearing assembly will wear out, it's a matter of when. That's why those with time-critical operations keep a Hot Swap exchange unit on their shelf for immediate swap outs.

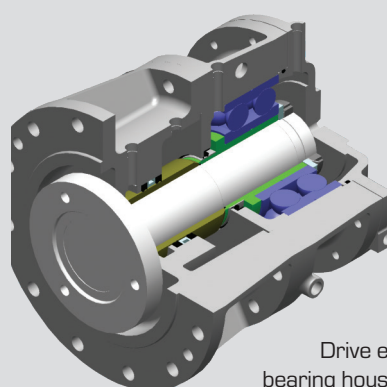
Every Hot Swap exchange bearing assembly is backed by our one-year material and workmanship warranty.

Hot Swap Bearing Exchange Program

For additional savings, send us the old unit. Ship your worn bearing assembly to our Service Center. If an inspection reveals that its shaft, bearing housing, bearing support and cover plate can be used again (many can be) for a future rebuild, we'll give you credit for the good parts.



Discharge end Hot Swap bearing housing assembly



Drive end Hot Swap bearing housing assembly

3-piece screw upgrade for Fuller-Kinyon® pumps

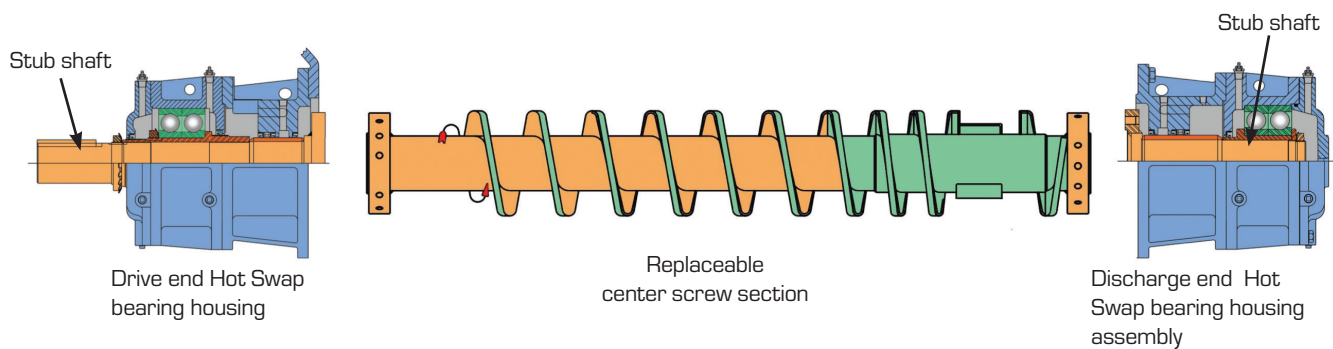
To take advantage of the Hot Swap bearing assemblies, your Fuller-Kinyon pump must be fitted with the 3-piece screw. In addition to the benefits of the Hot Swap assemblies the 3-piece screw design will save money in maintenance costs.

The majority of Type M Fuller-Kinyon pumps installed in the field have a single-piece screw design, and are the workhorses of their industries.

We introduced the 3-piece screw design both as a conversion kit for existing pumps and also as the standard for all new Type M pumps sold. This design splits the pump screw into three sections which are bolted together at the balance wheels of the screw.

On each end there is a stub shaft which is contained inside the bearing housing assembly. The center screw section is the replaceable wear part. It is no longer necessary to disconnect the coupling, expose the bearings and seals to a dusty and dirty plant environment, and pry the screw out of the drive side bearings. Furthermore, the 3-piece design requires the manipulation of fewer bolted connections compared to the 1-piece design - about 1/3 less.

Field data has shown that a screw change out can be accomplished with two technicians in 3-4 hours, while it may take three technicians and 6-8 hours for the one-piece screw design. There is no need to disconnect the motor from the drive-end Hot Swap shaft.



FULLER[®]

TECHNOLOGIES



fuller-technologies.com