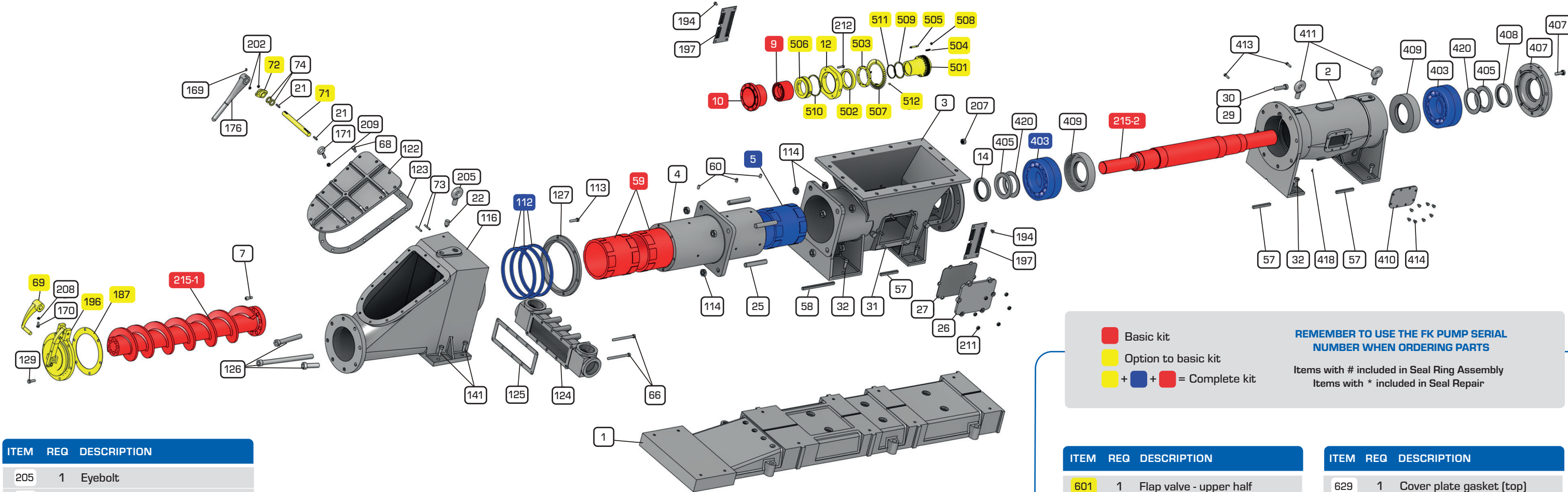


# FULLER-KINYON® TYPE H PUMP w/2 PC SCREW / Z-FLAP PARTS IDENTIFICATION

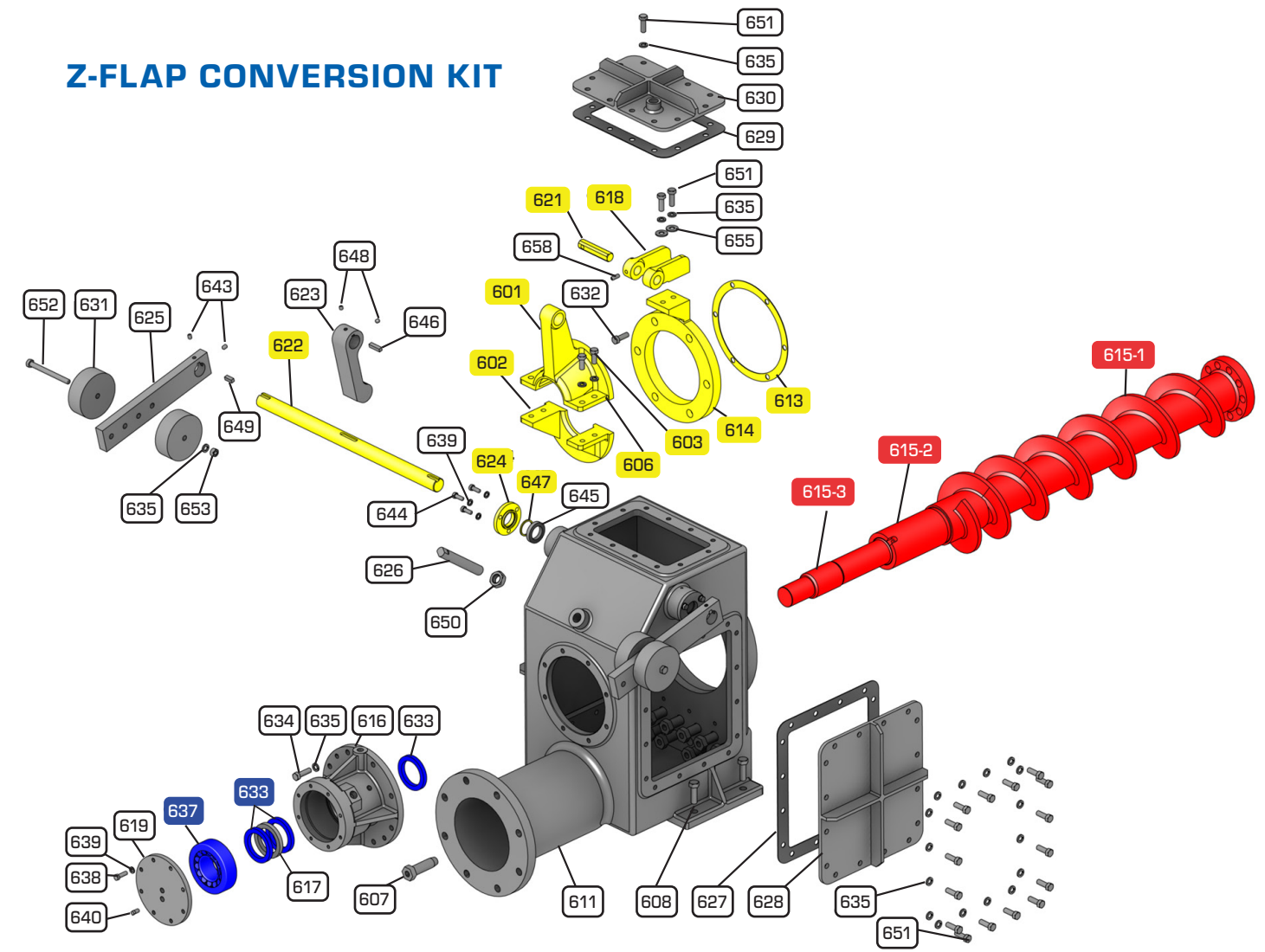
## H PUMP PARTS LIST

ITEM	REQ	DESCRIPTION
1	1	Base
2	1	Bearing housing
3	1	Hopper
4	1	Barrel
5	1	Barrel bushing - soft
7		Hex soc. Capscrew
9	1	Coupling locking assembly
10	1	Screw shaft coupling
12	1	Hopper bushing collar
14	1	Grease retainer
21	2	Sq. Key 1 1/4" lg.
22	1	Grease cup
25	4	Seal adjusting stud
26	2	Hand hole cover
27	2	Hand hole cover gasket
29	4	Hex head bolt
30	4	Hex head capscrew
31	12	Stud
32	8	Hex head capscrew
57	3	SQ. KEY 5" LG.
58	1	SQ. KEY 9.25" LG.
59	2	Barrel bushing - hard
60	9	Set screw
66	10	Hex head capscrew
68	14	Hex head capscrew
69	1	Blowout lever
71	1	Blowout lever shaft
72	1	Packing gland
73	2	Packing gland studs
74	2	Sq. Packing
112	3	Sq. Packing
113	6	Hex head capscrew
114	12	Jam nuts
116	1	Flapper valve body
122	1	Cover
123	1	Gasket
124	1	Air manifold
125	1	Gasket
126		Air nozzle
127	1	Barrel packing gland
129	6	Hex head capscrew
141	4	Hex head capscrew
169	1	Setscrew
170	1	Sq. Hd. Setscrew
171	1	Eyebolt
176	1	Blowout handle
187	1	Gasket
194	8	Hex head capscrew
196	1	Flapper valve assembly
197	2	Seal chamber cover
202	2	Hex Nut



ITEM	REQ	DESCRIPTION
205	1	Eyebolt
207	4	Hex nut
208	1	Jam nut
209	1	Jam nut
211	12	Hex nut
212	4	Hex soc. Capscrew
215-1	1	H2 F-K screw - discharge end
215-2	1	H2 F-K screw shaft - drive end
403	2	Double row ball bearing
405	2	Locknut
407	1	Bearing housing cover
408	1	Grease retainer
409	2	Grease retainer
410	1	Cover plate
411	2	Eyebolt
413	2	Hex soc. Setscrew
414	8	Hexhead capscrew
415	8	Hexhead capscrew
418	1	Caplug
420	2	Lockwasher
501	1	Seal ring bushing #
502	1	Seal ring # *
503	1	Seal ring backing plate #
504	18	Seal ring spring #
505	2	Drive pin # *
506	1	Hopper bushing # *
507	1	Split fan assembly #
508	2	Hex nut # *
509	1	O-ring # *
510	1	O-ring # *
511	1	O-ring # *
512	6	Hex soc. Button capscrew #

## Z-FLAP CONVERSION KIT



ITEM	REQ	DESCRIPTION
601	1	Flap valve - upper half
602	1	Flap valve - lower half
603	4	Hex head capscrew
606	4	Lockwasher
607		Air nozzles
608	4	Hex head capscrew
611	1	Discharge housing assembly
613	1	Flap seat gasket
614	1	Flap seat
615-1	1	H2 F-K Z-flap screw
615-1	1	Sleeve
615-1	1	Wear sleeve
616	1	Bearing housing
617	1	Lantern ring
618	1	Bracket - flap valve
619	1	Bearing cover
621	1	Flap valve pin
622	1	Blowout lever shaft
623	1	Blowout lever
624	2	Seal plate
625	2	Counterweight arm
626	1	Stop screw
627	2	Cover plate gasket [side]
628	2	Cover plate [side]

ITEM	REQ	DESCRIPTION
629	1	Cover plate gasket [top]
630	1	Cover plate [top]
631	4	Counterweight
632	6	Hex soc. Capscrew
633	3	Radial lip seal
634	8	Hex head capscrew
635	56	Helical spring lockwasher
637	1	Spherical roller bearing
638	8	Hex head capscrew
639	14	Helical spring lockwasher
640	1	Pipe plug
643	8	Hex soc. Setscrew
644	6	Hex head capscrew
645	2	Shaft collar
646	1	Sq. Key
647	2	O-ring
648	2	Hex soc. Setscrew
649	2	Sq. Key
650	1	Hex jam nut
651	46	Hex head capscrew
652	2	Hex head capscrew
653	2	Hex nut
655	2	Flat washer
658	1	Soc. Setscrew